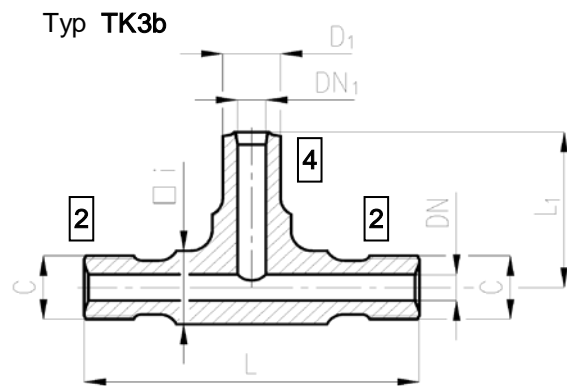
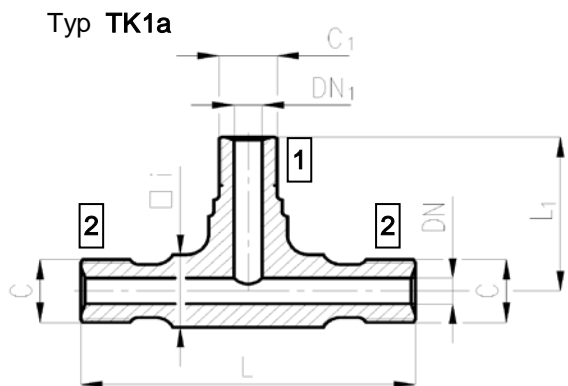
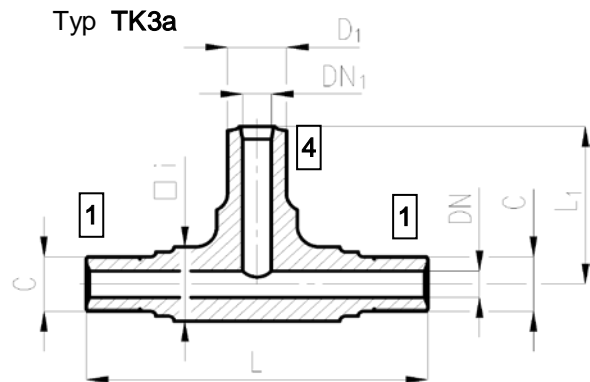
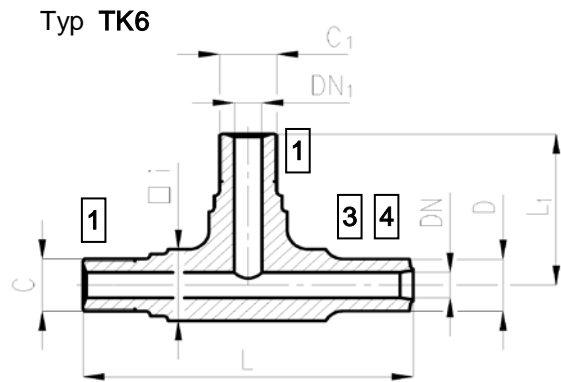
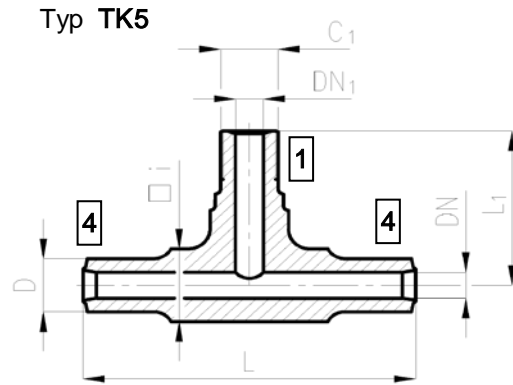
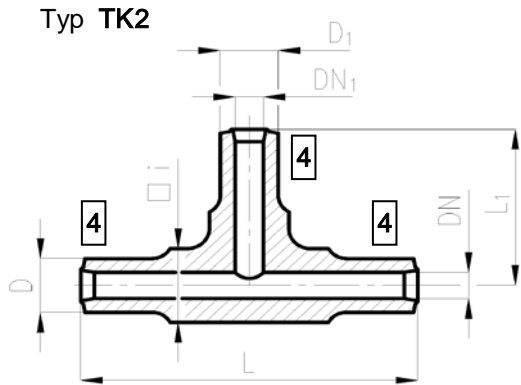


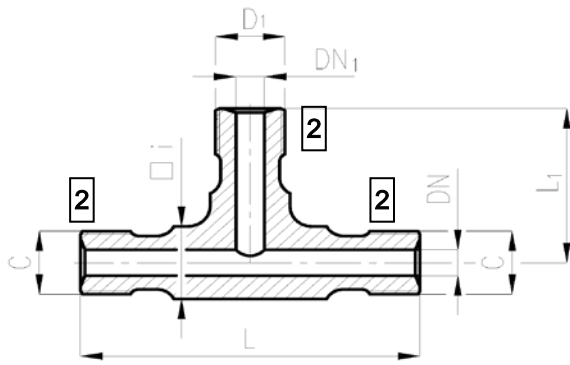
CHEMOPETROL a.s. ZÁVOD 02	T - KUSY	N16.665
		list 1/3



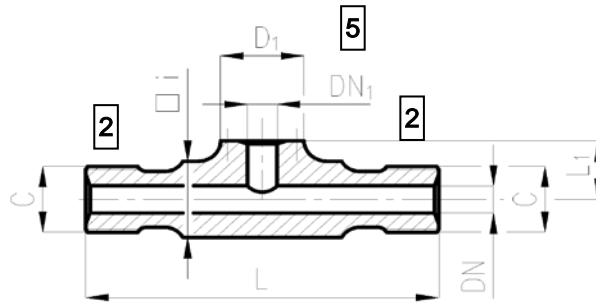
Norma neplatí pro Jednotku Rafinérie Litvínov a Kralupy.

Nahrazuje :	Správce normy :	Platnost od :
N 16.665 z 1/1980	odd. Normalizace - Technické služby	01.10.2002

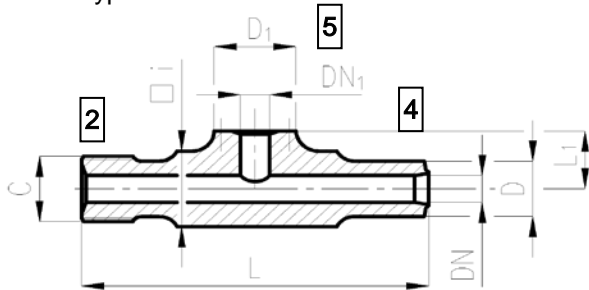
Typ TK1b



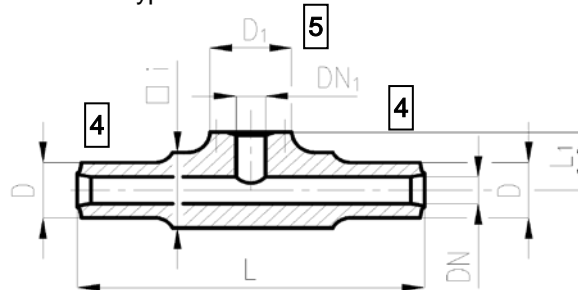
Typ TK3c



Typ TK4

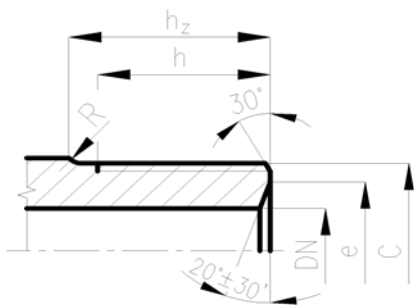


Typ TK2a

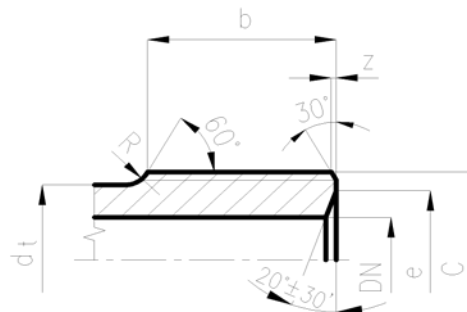


Provedení závitových konců

1

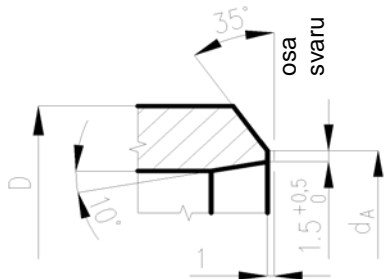


2

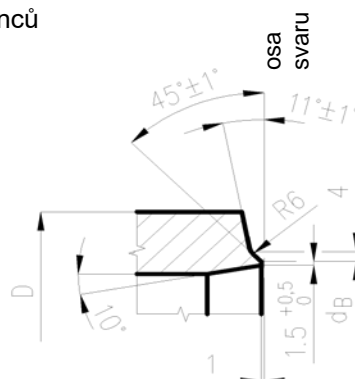


Provedení přivařovacích konců

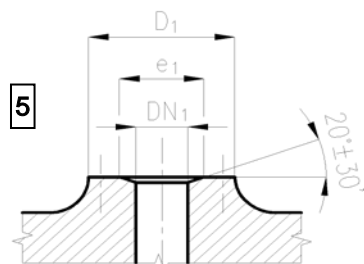
3



4



Úprava pro čochu odbočky T-kusu



DN/DN ₁	Typ	Rozměry																					Číslo výkresu	Materiál	Hmot- nost 1ks [kg]					
		DN											DN ₁																	
		C	e	h	h _z	b	z	R	d _t	D	d _A	d _B	C ₁	e ₁	h ₁	h _{z1}	b ₁	z ₁	R ₁	d _{t1}	D ₁	d _{B1}				□ i	L	L ₁		
16/10	TK6		G 1"	26	30	35	-	-	3	-	35,5	14,6	-	G 3/4"	18	28	33	-	-	3	-	-	-	40	190	90	3-CH-3719	12020	1,5	
30/16	TK6		G 1 1/2"	43	35	40	-	-	5	-	49	22,25	-	G 1"	26	30	35	-	-	3	-	-	-	55	240	105	3-CH-3714		3	
30/30	TK6		G 1 1/2"	43	35	40	-	-	5	-	49	22,25	-	G 1 1/2"	43	35	40	-	-	5	-	-	-	55	240	120	3-CH-3713		3,7	
45/10	TK6		G 2 1/4"	60	45	50	-	-	5	-	71,5	-	54,15	G 3/4"	18	28	33	-	-	3	-	-	-	80	300	110	3-CH-3711		8,8	
58/58	TK6		IG 89x1/8"	76	55	60	-	-	5	-	84,2	-	63,5	IG 89x1/8"	76	55	60	-	-	5	-	-	-	100	340	170	3-CH-3737	15520	17,8	
70/70	TK5		-	-	-	-	-	-	-	-	103,5	-	81	IG101x1/8"	-	-	-	-	-	-	-	-	-	115	400	200	3-CH-3662	12020	27,4	
70/70	TK2		-	-	-	-	-	-	-	-	103,5	-	81	-	-	-	-	-	-	-	-	-	103,5	81	115	400	200		3-CH-3661	27,4
90/58	TK5		-	-	-	-	-	-	-	-	129	-	101	IG 89x1/8"	-	-	-	-	-	-	-	-	-	140	470	210	3-CH-3660		41,8	
★120/120	TK3a		W169x1/6"	152	95	105	-	-	5	-	-	-	-	-	-	-	-	-	-	-	-	-	173,5	131,1	197,5 185	580	290		2-CH-2296	90
160/70	TK6		IG225x1/4,5"	202	125	140	-	-	5	-	232	-	179	IG101x1/8"	92	65	70	-	-	5	-	-	-	240	720	290	3-CH-3654	15423	168	
160/70	TK5		-	-	-	-	-	-	-	-	232	-	179	IG101x1/8"	92	65	70	-	-	5	-	-	-	240	720	290	3-CH-3653		168	
★250/160	TK5		-	-	-	-	-	-	-	-	318	-	268	IG225x1/4,5"	202	125	140	-	-	5	-	-	-	380	1270	500	2-CH-2014a	15423	665	
★250/160	TK5		-	-	-	-	-	-	-	-	318	-	268	IG225x1/4,5"	202	125	140	-	-	5	-	-	-	380	1270	500	2-CH-2015a		665	
★300/90	TK3c		W419x1/4"	345	-	-	190	5	35	378	-	-	-	116	-	-	-	-	-	-	-	-	260	-	450	1420	250	3-CH-3319a	15128	1040
★300/90	TK4		W419x1/4"	345	-	-	190	5	35	378	378	-	318	-	116	-	-	-	-	-	-	-	260	-	450	1420	250	6273-1-13-20		1020
★300/120	TK4		W419x1/4"	345	-	-	190	5	35	378	378	-	318	-	152	-	-	-	-	-	-	-	330	-	450	1420	250	6273-1-10-18		1035
★300/120	TK4		W419x1/4"	345	-	-	190	5	35	378	378	-	318	-	152	-	-	-	-	-	-	-	330	-	450	1419	250	6273-1-10-19 3-CH-3214a		1035
★300/120	TK2a		-	-	-	-	-	-	-	-	378	-	318	-	152	-	-	-	-	-	-	-	330	-	450	1418	250	6273-1-10-26		1020
★300/120	TK3c		W419x1/4"	345	-	-	190	5	35	378	-	-	-	152	-	-	-	-	-	-	-	-	330	-	450	1420	250	6273-1-14-06		1055
★300/160	TK1a		W419x1/4"	345	-	-	190	5	35	378	-	-	-	IG225x1/4,5"	202	125	140	-	-	5	-	-	-	450	1420	500	6273-1-12-09 2-CH-2021a	1070		
300/300	TK3b		W419x1/4"	345	-	-	190	5	35	378	-	-	-	-	-	-	-	-	-	-	-	-	378	318	450	1420	709	6273-1-12-06		1705
300/300	TK1b		W419x1/4"	345	-	-	190	5	35	378	-	-	-	W419x1/4"	345	-	-	190	5	35	378	-	-	450	1420	710	2-CH-2020a	1260		

★ s odběry

✦ ... krátká odbočka

Minimální tloušťky částí T-kusů: - DN <= 160 z materiálů 12020 a 15520 dle N16.17
- DN >= 160 z materiálů 15423 a 15128 dle N16.618

Označení: **T-kus DN90/DN58 z oceli 12020 podle N16.665**

Rozlišovací znaky T-kusů dle N16.608

N16.665
3/3

